

INSTALLATION MANUAL



Agra-GPS Case-JD Bridge for Case 10,20,30,40 and 50-series combines

Version 1.1
Revision A
August 2019

Contact information
Agra-GPS Ltd.
Box 2585
Stony Plain, AB
T7Z 1X9
CANADA
001 780 990 4052 Phone
www.agra-gps.com

Release Notice

This is the August 2019 release (Revision A) of the Case-JD Bridge Installation Manual.

Disclaimer

While every effort has been made to ensure the accuracy of this document, Agra-GPS Ltd assumes no responsibility for omissions and errors. Nor is any liability assumed for damages resulting from the use of information contained herein. Agra-GPS Ltd shall not be responsible or liable for incidental or consequential damages or a loss of anticipated benefits or profits, work stoppage or loss, or impairment of data arising out of the use, or inability to use, this system or any of its components.

DO NOT USE THE Case-JD Bridge IF YOU DISAGREE WITH THE DISCLAIMER.

Important Safety Information

Read this manual and the operation and safety instructions carefully before installing the Case-JD Bridge.

- Follow all safety information presented within this manual.
- If you require assistance with any portion of the installation or service of your equipment, contact your Agra-GPS for support.
- Follow all safety labels affixed to the system components. Be sure to keep safety labels in good condition and replace any missing or damaged labels. To obtain replacements for missing or damaged safety labels, contact Agra-GPS.

When operating the machine after installing the Case-JD Bridge, observe the following safety measures:

- Be alert and away of surroundings.
- Do not operate the Case-JD Bridge system while under the influence of alcohol or an illegal substance.
- Remain in the operator's position in the machine at all times Case-JD Bridge system is engaged.
- Determine and remain a safe working distance from other individuals. The operator is responsible for disabling the Case-JD Bridge system when a safe working distance has been diminished.
- Ensure the Case-JD Bridge is disabled prior to starting any maintenance work on the machine or parts of the Case-JD Bridge system.
- Follow all safety instructions from the Case system as well as the JD system!
- The Case-JD Bridge must only be used in the field, never on the street!

Electrical Safety

- Always verify that the power leads are connected to the correct polarity as marked. Reversing the power leads could cause severe damage to the equipment.
- Verify that all cables and connectors are not going over sharp edges and are not pinned, as this could cause power shortages and/or malfunctions.

Introduction

Congratulations on your purchase of the Case-JD Bridge. The Case-JD Bridge is designed to bridge the communication between a Case combine (Autoguide ready) and a John Deere display (1800, 2600, 2630, 4640). This allows a JD display to create maps in the John Deere format and also provides autosteer.

The operator used the JD display to create AB-lines. The current position is determined by a John Deere receiver and all this information is used by the Case-JD Bridge to create steering instructions for the Case combine. All conditions for autosteer such as minimum speed, steering enabled etc. Must be met by the Case system before the autosteer engage option in the combine can be activated.

NOTICE

This manual is not intended to replace the manuals for the Case combine or the John Deere system. The operator must read and understand the manuals and instructions of these systems, before using the Case-JD Bridge.

Step 1: Mounting the Case-JD Bridge 40 and 50 series

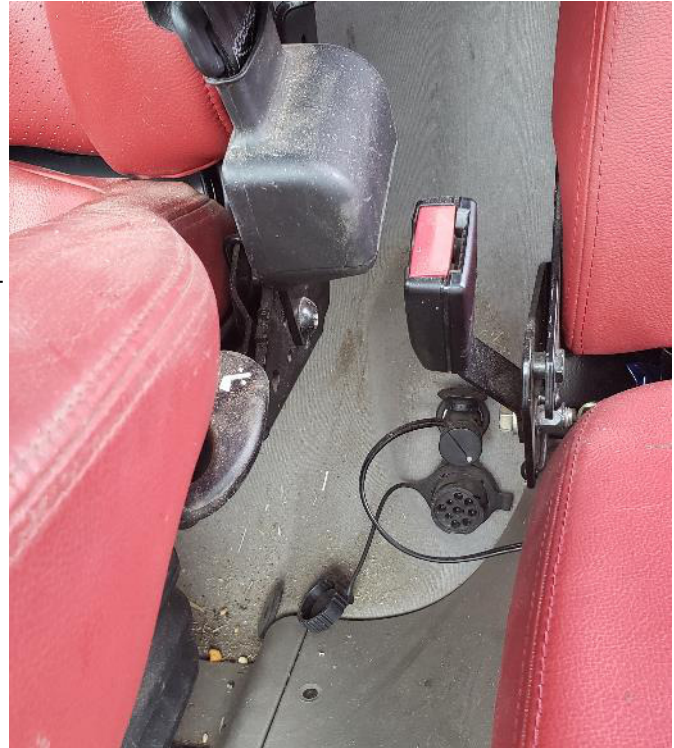
The Case-JD Bridge is installed right of the driver seat inside the cab. Lift the plastic cover and you should find lots of space to setup the Case-JD bridge.

The Bridge adaptor has 2 connectors which must be connected to the combine. One connects to a 12-pin DTM deutsch connector on the right side of the combine for power, the other is a round diagnostic port connector, it goes to the left of your seat. (see picture).

NOTE: You must disconnect the nav controller, should one be present!

The 2nd part of the adapter inserts into the 12-pin deutsch connector going to the seat.

It is the source for constant 12V battery power used by the JD components to store data.



Step 1: Mounting the Case-JD Bridge 10 and 20 series

Just as in the newer 40 and 50 machines, the Bridge is installed to the right of your seat, below the armrest.

Inside the armrest, you can find a blue square connector, it provides access to power and canbus and is the only connector required.

Connect the provided adapter cable to the blue connector.



The John Deere receiver must be mounted at the front of the cab.

Mount the JD GPS receiver to the front of the cab



Step 2: Operating the Case-JD Bridge (40/50 series)

If the JD display shows "road mode" or does not go from "Steer OFF" (2 parts of the PIE) to "Steer ON" your Case combine is not ready for autosteer.

For the Case combine to be autosteer ready, you must hold the "autosteer enable" button in the top panel for several seconds. You must also move the steering wheel by hand at least once.



The autosteer is engaged with the "Resume" button on the right side of the control handle.

Disengage by moving the steering wheel.



Step 2: Operating the Case-JD Bridge (10/20 series)

If the JD display shows "road mode" or does not go from "Steer OFF" (2 parts of the PIE) to "Steer ON" your Case combine is not ready for autosteer.

For the Case combine to be autosteer ready, you must hold the "autosteer enable" button in the armrest for several seconds. The button has 2 functions: Resume and autosteer enable!!!

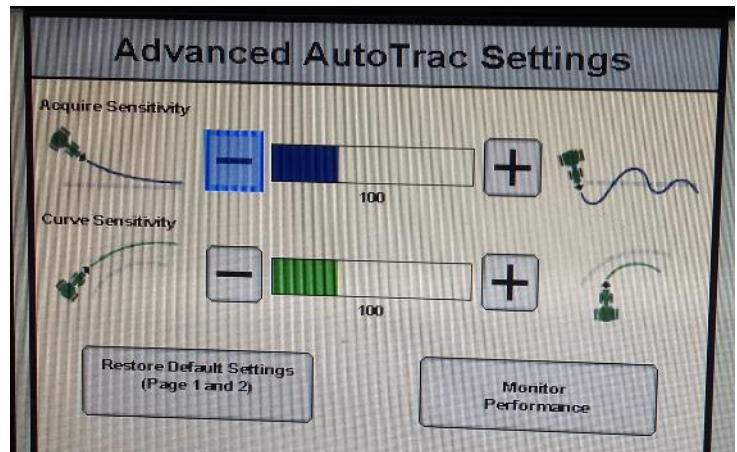
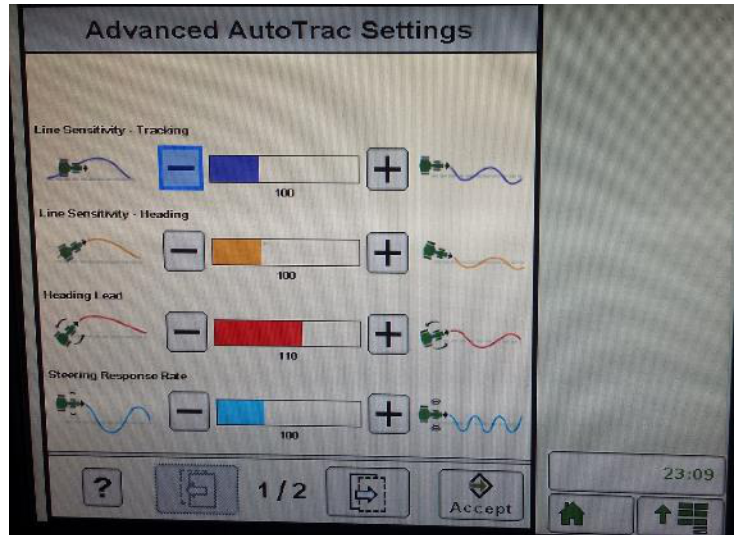


The autosteer is engaged with the "Resume" button in the control handle.

Disengage by moving the steering wheel.

Step 3: Adjusting steering

Using the JD display you may adjust your steering performance. Most machines will perform optimally with all JD settings at 100. If a change is required, find an open area where you can travel at target speed and adjust one parameter at a time until you are satisfied with the steering performance.



Step 4: ISO Application

The CASE bridge comes with an ISO application that will be loaded onto the John Deere monitor. The app should automatically store itself on the monitor after the first few minutes of the initial startup. On subsequent runs the app will load itself from memory as soon as possible. The CASE app includes:

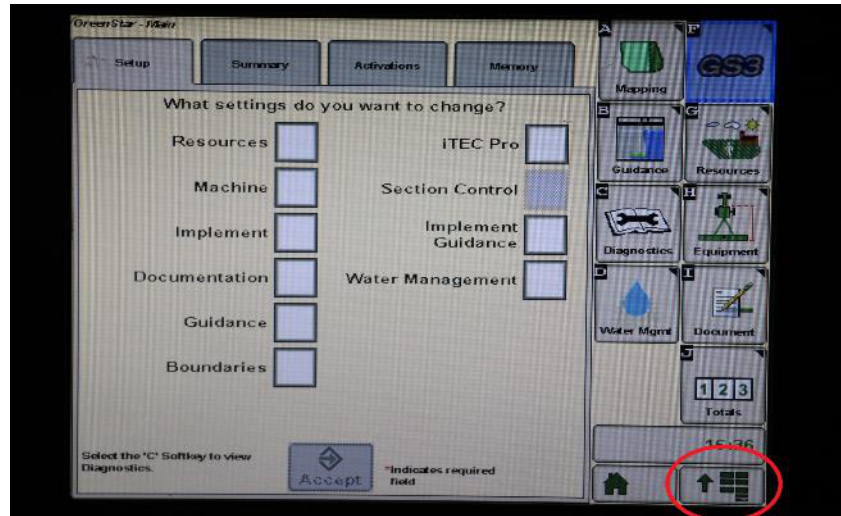
- Calibration
- Option to change work recording mode
- Option to change the machine type
- Optional autosteer engage button & status
- Help page

Where to find the CASE ISO application on the John Deere monitor:

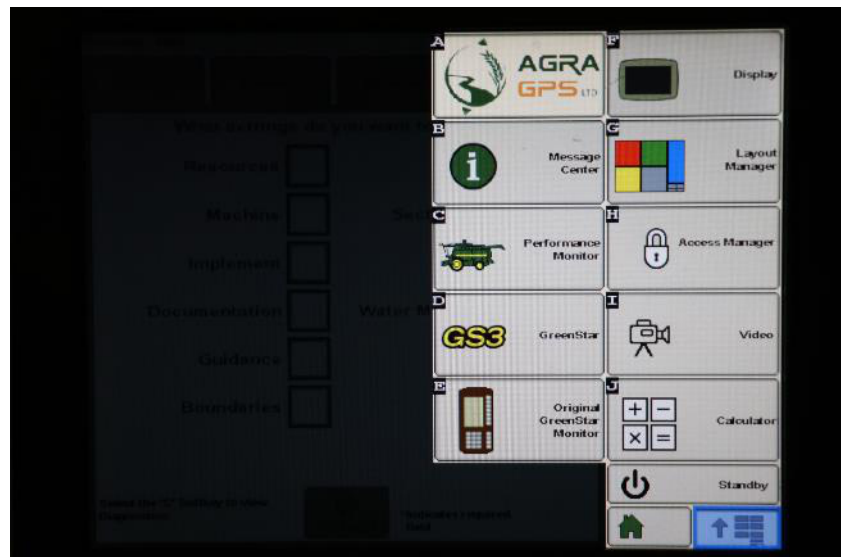
- On a John Deere 4640 the application will be loaded in the ISOBus VT section on the main page of the display.



- On John Deere 1800, 2600, 2630 the application will be shown in the side menu of the John Deere display. The side menu is opened by clicking the button on the bottom right of the display.



- **NOTE:** John Deere 1800 and 2600 monitors do not show a loading bar for ISO applications, while 2630 and 4640 monitors do.



If the ISO application is not loaded:

- Try clearing the monitor's memory. On 2630 monitors this can be done in the Message Center in the side menu. Go to the Cleanup tab, check controllers, then Begin Cleanup. On 4640 monitors this can be done in the info page of the ISOBus VT. Navigate to the ISOBus VT window and click the info button at the top of the page, then press Clean Up ISO Bus VT.
- Do a hard reset of the John Deere monitor (Unplug it, then plug it back in).
- Do a full restart of the machine. Remember the app may take a few minutes to load.

Step 5: Combine Settings for Autosteer

Check that the navcontroller icon is showing at the bottom of the screen. Should it not show, you will need to get your Case dealer to enable the autoguidance settings on the combine! It requires a service laptop! The valve should also be calibrated at that time as the combine was likely never setup for autosteer.

To make the AutoSteer working a couple checkmarks in the combines display must be selected.

Please see the following photos:



