

INSTALLATION MANUAL



Agra-GPS Ideal-JD Bridge for Fendt Ideal Combines

Version 2.0
Revision A
July 2020



Contact information
Agra-GPS Ltd.
Box 2585
Stony Plain, AB
T7Z 1X9
CANADA
001 780 990 4052 Phone
www.agra-gps.com

Release Notice

This is the July 2020 release (Revision A) of the Ideal-JD Bridge Installation Manual.

Disclaimer

While every effort has been made to ensure the accuracy of this document, Agra-GPS Ltd assumes no responsibility for omissions and errors. Nor is any liability assumed for damages resulting from the use of information contained herein. Agra-GPS Ltd shall not be responsible or liable for incidental or consequential damages or a loss of anticipated benefits or profits, work stoppage or loss, or impairment of data arising out of the use, or inability to use, this system or any of its components.

DO NOT USE THE Ideal-JD Bridge IF YOU DISAGREE WITH THE DISCLAIMER.

Important Safety Information

Read this manual and the operation and safety instructions carefully before installing the Ideal-JD Bridge.

- Follow all safety information presented within this manual.
- If you require assistance with any portion of the installation or service of your equipment, contact your Agra-GPS for support.
- Follow all safety labels affixed to the system components. Be sure to keep safety labels in good condition and replace any missing or damaged labels. To obtain replacements for missing or damaged safety labels, contact Agra-GPS.

When operating the machine after installing the Ideal-JD Bridge, observe the following safety measures:

- Be alert and aware of surroundings.
- Do not operate the Ideal-JD Bridge system while under the influence of alcohol or an illegal substance.
- Remain in the operator's position at all times when the Ideal-JD Bridge system is engaged.
- Determine and remain a safe working distance from other individuals. The operator is responsible for disabling the Ideal-JD Bridge system when the safe working distance has been diminished.
- Ensure the Ideal-JD Bridge is disabled prior to starting any maintenance work on the machine or parts of the Ideal-JD Bridge system.
- Follow all safety instructions from the Ideal system as well as the JD system.
- The Ideal-JD Bridge must only be used in the field, never on the street.

Electrical Safety

- Always verify that the power leads are connected to the correct polarity as marked. Reversing the power leads could cause severe damage to the equipment.
- Verify that all cables and connectors are not going over sharp edges and are not pinned, as this could cause power shortages and/or malfunctions.

Step 1: Mounting the Ideal-JD Bridge

The Ideal-JD Bridge is installed right of the driver seat.

Open the panel to the right of the seat and expose the compartment below.



Towards the back of the compartment there should be three diagnostic ports. These ports will have numeric designations.

Take the Ideal-JD adapter cable and connect the end labelled 'Main' into the diagnostic port labelled '2'. Connect the other end, labelled 'Secondary' into the diagnostic port labelled '1'.



Then, insert the cigarette lighter power end of the Ideal-JD adapter into the **switched-power** cigarette power port located towards the back of the cab. It is important that this is not connected to a constant-power port.



Connect the final end of the Ideal-JD Adapter, the 12-pin male Deutsch connector, into the 12-pin female Deutsch connector of the Ideal-JD bridge.

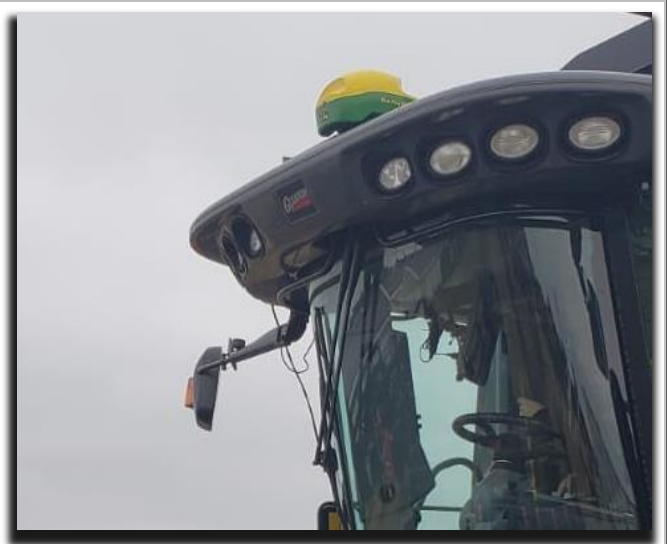
Next, take the last cable in the set, the Agra-GPS John Deere adapter cable, and connect the 6-pin male Deutsch into the 6-pin female Deutsch of the Ideal-JD bridge.

Step 2: Mounting the JD Equipment

The John Deere GPS receiver **MUST** be mounted at the front of the cab.

Use the provided adapter cable to connect the 12-pin deutsch of the JD GPS receiver with the 12-pin deutsch of the Ideal-JD cable.

It is best to route the JD receiver end of the Ideal-JD cable out through the right side of the cab and up to the roof.



Mount the JD Monitor somewhere sturdy inside the cab and connect it to the Ideal-JD cable.

The JD-display may be mounted many different ways.

You may use the standard JD mounts or a RAM mount.

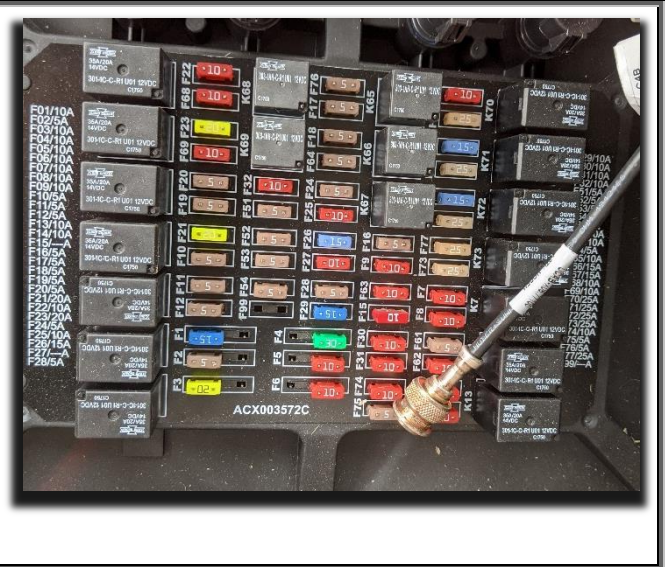
RAM-270U + 2 * 1.5" balls (RAM-202U) +
4" double socket arm (RAM-201U)

<http://www.rammount.com/part/RAM-270U>



Step 3: Remove the existing Steering Controller

In order for the Ideal-JD bridge to function, the existing guidance controller must be removed from operation. To do this, simply remove fuse **F28** (VD03) in the same compartment where the Ideal-JD bridge was installed. On startup there may be some errors related to the VD03 controller or the F28 fuse. These can be ignored.



Step 4: Usage of the Ideal-JD Bridge

Further instructions for set up and usage of the Ideal-JD bridge can be found within its respective user manual.