

# INSTALLATION MANUAL

## Agra-GPS Horsch-JD Bridge for the Amazone Pantera sprayer



Version 1.0  
Revision A  
June 2019



Contact information  
Agra-GPS Ltd.  
Box 2585  
Stony Plain, AB  
T7Z 1X9  
CANADA  
001 780 990 4052 Phone  
[www.agra-gps.com](http://www.agra-gps.com)

#### Release Notice

This is the June 2019 release (Revision A) of the Amazone-JD Bridge for Amazone Pantera 4502 / 4503 Installation Manual.

### **Disclaimer**

While every effort has been made to ensure the accuracy of this document, Agra-GPS Ltd assumes no responsibility for omissions and errors. Nor is any liability assumed for damages resulting from the use of information contained herein. Agra-GPS Ltd shall not be responsible or liable for incidental or consequential damages or a loss of anticipated benefits or profits, work stoppage or loss, or impairment of data arising out of the use, or inability to use, this system or any of its components.

**DO NOT USE THE Horsch-JD Bridge IF YOU DISAGREE WITH THE DISCLAIMER.**

## Important Safety Information

Read this manual and the operation and safety instructions carefully before installing the Amazone-JD Bridge.

- Follow all safety information presented within this manual.
- If you require assistance with any portion of the installation or service of your equipment, contact your Agra-GPS for support.
- Follow all safety labels affixed to the system components. Be sure to keep safety labels in good condition and replace any missing or damaged labels. To obtain replacements for missing or damaged safety labels, contact Agra-GPS.

When operating the machine after installing the Amazone-JD Bridge, observe the following safety measures:

- Be alert and away of surroundings.
- Do not operate the Amazone-JD Bridge system while under the influence of alcohol or an illegal substance.
- Remain in the operator's position in the machine at all times Amazone-JD Bridge system is engaged.
- Determine and remain a safe working distance from other individuals. The operator is responsible for disabling the Amazone-JD Bridge system when a safe working distance has been diminished.
- Ensure the Amazone-JD Bridge is disabled prior to starting any maintenance work on the machine or parts of the Amazone-JD Bridge system.
- Follow all safety instructions from the Amazone system as well as the JD system!
- The Amazone-JD Bridge must only be used in the field, never on the street!

## Electrical Safety

- Always verify that the power leads are connected to the correct polarity as marked. Reversing the power leads could cause severe damage to the equipment.
- Verify that all cables and connectors are not going over sharp edges and are not pinned, as this could cause power shortages and/or malfunctions.

## **Introduction**

Congratulations on your purchase of the Amazone-JD Bridge. The Amazone-JD Bridge is designed to bridge the communication between a Amazone Pantera 4502 / 4503 sprayer (autosteer ready) and a John Deere display (1800, 2600, 2630, or 4640). This allows a JD display to create maps in the John Deere format and also provides straight AB-Line autosteer.

The operator used the JD display to create AB-lines. The current position is determined by a John Deere receiver and all this information is used by the Amazone-JD Bridge to create steering instructions for the self propelled sprayer. All conditions for autosteer such as minimum speed, steering enabled etc. must be met by the Amazoe system before the autosteer engage option in the self propelled sprayer can be activated.

### **NOTICE**

This manual is not intended to replace the manuals for the sprayer or the John Deere system. The operator must read and understand the manuals and instructions of these systems, before using the Amazone-JD Bridge.

## Installation of the Amazone-JD Bridge

### Step 1: Mounting the Amazone-JD Bridge

The Amazone-JD Bridge is installed right of the driver seat.

The plastic cover next to the seat under the armrest can be lifted up.

Under this you will find the fuse board.

Lift it up and connect the 9-Pin D-Sub connector of the provided adapter harness to the fuseboard.

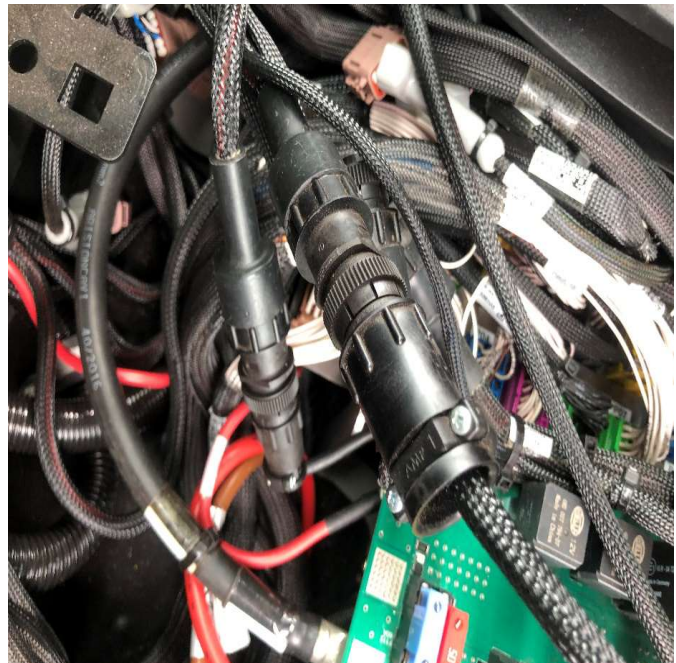


Now connect the 9-Pin ISO-BUS incab connector of the provided adapter harness to one of the machine.incab ports.



Next step is to run the provided harness to connect display and receiver.

After this connect the bridge to the harness and the adapter harness.





## Step 2: Mounting the JD Display

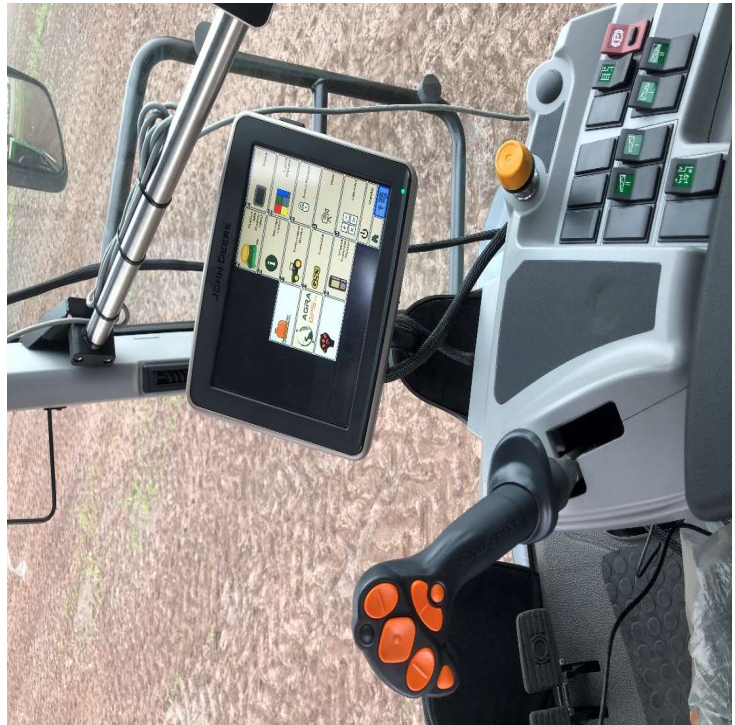
The mounts for the JD display are NOT part of the Horsch-JD Bridge, however they can either be ordered as an optional item from AgraGPS or directly from RAM.

The JD-display may be mounted many different ways.

You may use the standard JD mounts or a RAM mount. RAM-270U + 2 \* 1.5" balls (RAM-202U) + 4" double socket arm (RAM-201U)

<http://www.rammount.com/part/RAM-270U>

Here the 2630 was mounted above a Mueller ISO terminal.



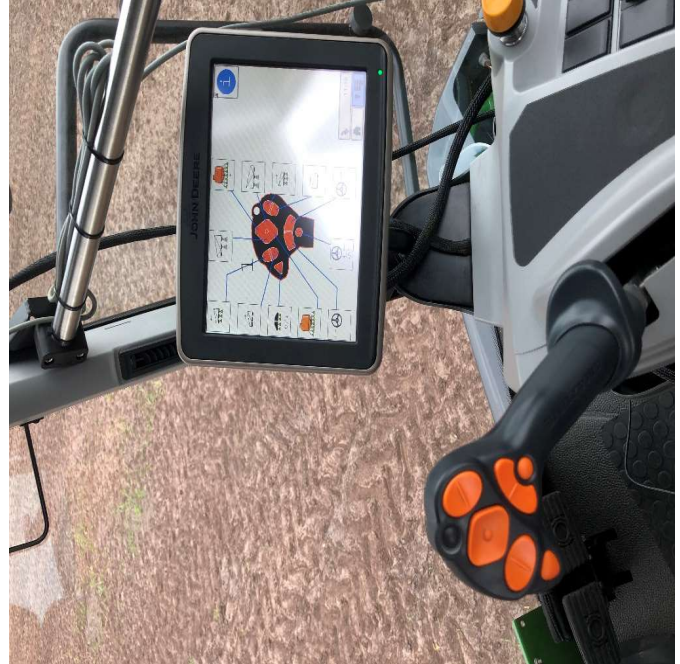
## Step 3: Mounting the JD Receiver

The Amazone-JD Bridge does NOT include a standard JD-receiver bracket, however the sprayer has a mount point right behind the cab.

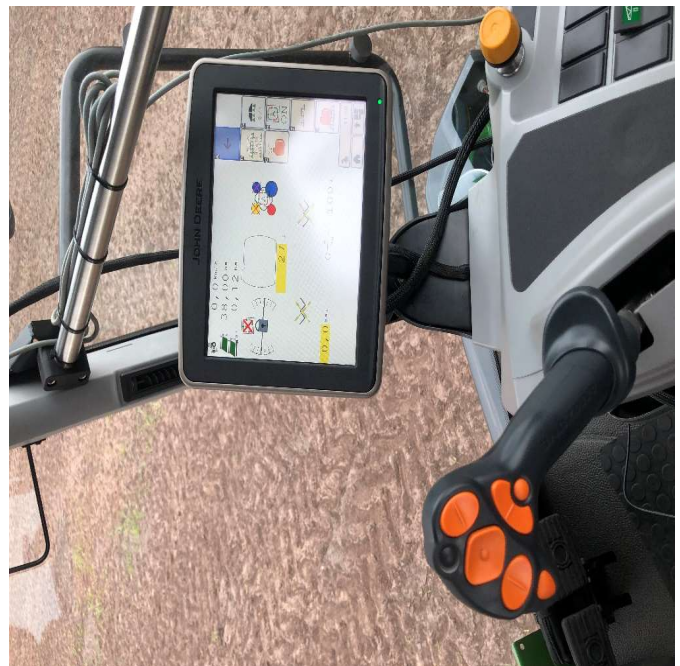


## Step 4: Operating the System

After the first start of the system the JD display should show the Joystick of the sprayer.



Also the Amazone ISO application to control the sprayer should load.





## Roadmode

To switch between road and field mode there is a button on the right top of the cab.



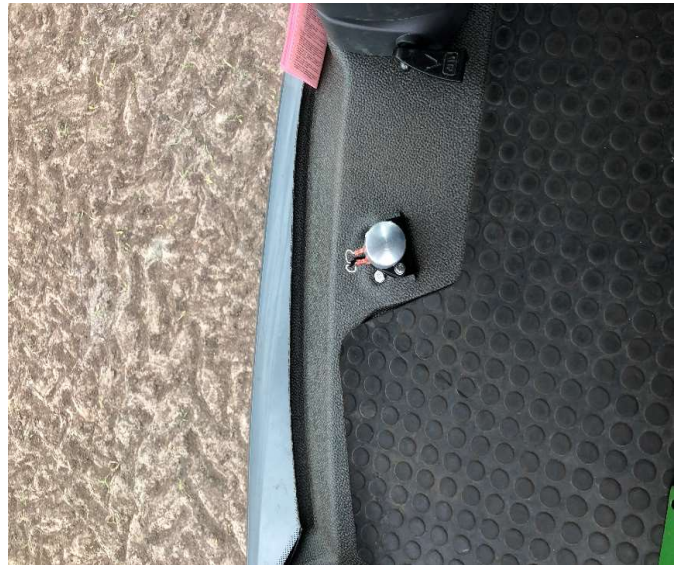
Additional informations and settings you will find in the Pantera display.



## RESUME BUTTON

The resume button is located on bottom of the cab on the left side of the steering wheel.

Just touch it with your foot to activate the autosteer.



## **Shut down the JD System**

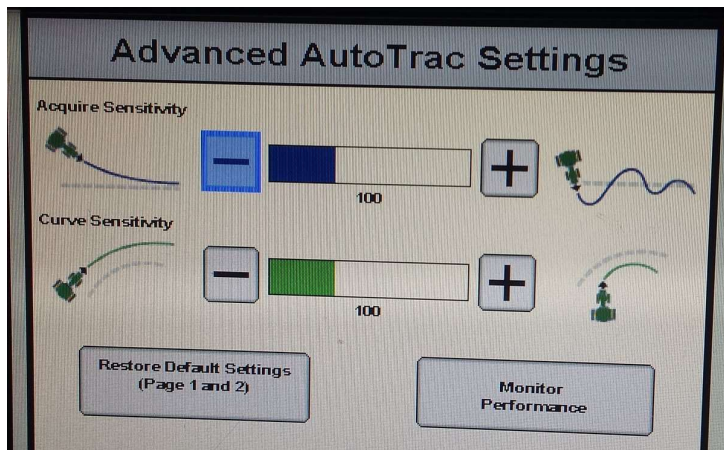
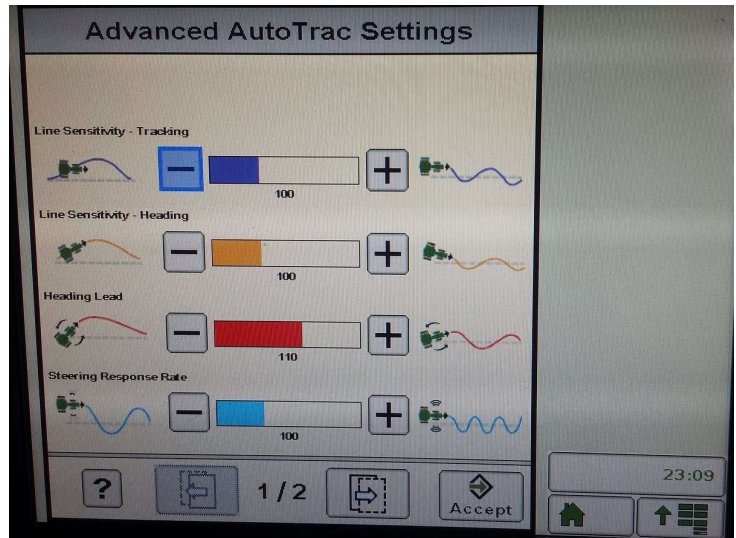
If the JD display wont shut down after ignition is off you have to press the yellow button down for 3 seconds.

The button is located on the right side behind the armrest.



## Step 5: Adjusting steering

Using the JD display you may adjust your steering performance. Most machines will perform optimally with all JD settings at 100. If a change is required, find an open area where you can travel at target speed and adjust one parameter at a time until you are satisfied with the steering performance.





## Step 6: ISO Application

The Amazone-JD bridge comes with an ISO application that will be loaded onto the John Deere monitor. The app should automatically store itself on the monitor after the first few minutes of the initial startup. On subsequent runs the app will load itself from memory as soon as possible. The Amazone app includes:

- Option to change work recording mode
- Optional autosteer engage button & status
- Help page

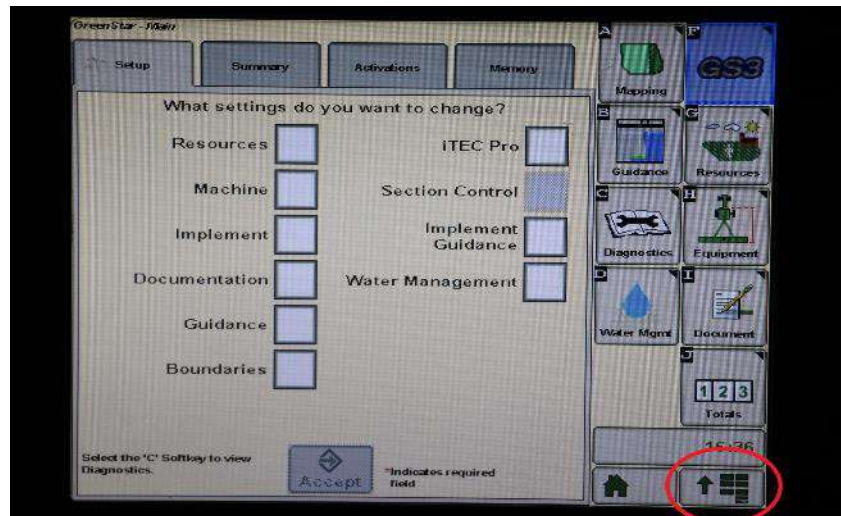
Where to find the Amazone-JD ISO application on the John Deere monitor:

- On a John Deere 4640 the application will be loaded in the ISOBus VT section on the main page of the display.

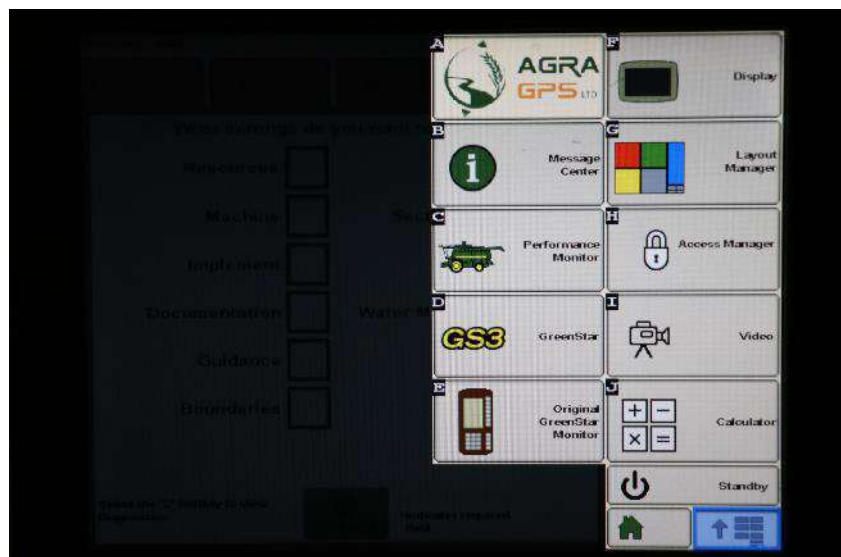




- On John Deere 1800, 2600, 2630 the application will be shown in the side menu of the John Deere display. The side menu is opened by clicking the button on the bottom right of the display.



- **NOTE:** John Deere 1800 and 2600 monitors do not show a loading bar for ISO applications, while 2630 and 4640 monitors do.



If the ISO application is not loaded:

- Try clearing the monitor's memory. On 2630 monitors this can be done in the Message Center in the side menu. Go to the Cleanup tab, check controllers, then Begin Cleanup. On 4640 monitors this can be done in the info page of the ISOBus VT. Navigate to the ISOBus VT window and click the info button at the top of the page, then press Clean Up ISO Bus VT.
- Do a hard reset of the John Deere monitor (Unplug it, then plug it back in).
- Do a full restart of the machine. Remember the app may take a few minutes to load.