

# USER'S MANUAL



## Agra-GPS GleanerS9-JD Bridge for Gleaner S9 Series Combines

Version 1.0  
Revision A  
July 2020



## **Introduction**

Congratulations on your purchase of the GleanerS9-JD Bridge. The GleanerS9-JD Bridge is designed to bridge the communication between a GleanerS9 machine (Autosteer ready) and a John Deere display (JD1800, JD2600, JD2630, JD4240 or JD4640). This provides autosteering capabilities and allows a JD display to create maps in the John Deere format.

The operator uses the JD display to create guidance lines. The current position is determined by a John Deere receiver and all this information is used by the GleanerS9-JD Bridge to create steering instructions for the Gleaner machine. All conditions for autosteer such as minimum speed, steering enabled, etc. must be met by the Gleaner system before the autosteer engage option in the machine can be activated. The GleanerS9-JD bridge has been developed so that the user may use their John Deere equipment with the standard functionality when possible.

## **NOTICE**

This manual is not intended to replace the manuals for the Gleaner machine or the John Deere system. The operator must read and understand the manuals and instructions of these systems, before using the GleanerS9-JD Bridge.

# Operating notes for the Agra-GPS GleanerS9-JD Bridge

The autosteer enable switch must be on for autosteering capabilities to be allowed on the machine side. This button is located on the armrest to the right of the seat.



For autosteer activation you must follow the "normal" JD steps to be autosteer ready:

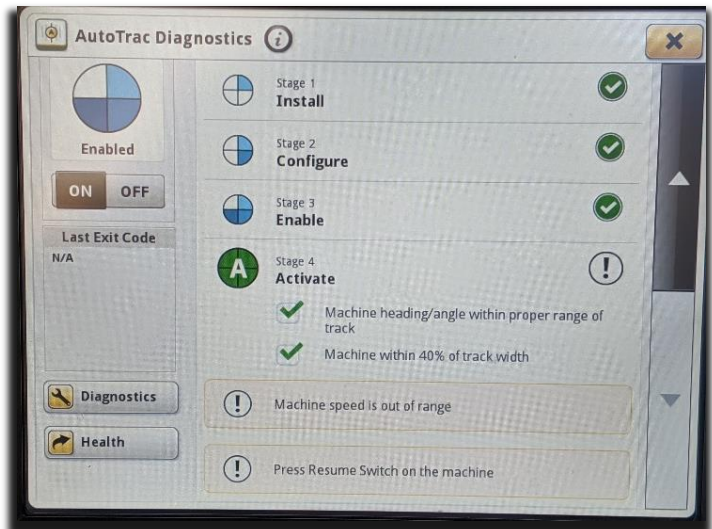
- Create an AB-line
- Move from "Steer OFF" to "Steer ON" (3 sections of the guidance 'pie') on the JD display.

**NOTE:** In order to go from "Steer OFF" to "Steer ON" the user must satisfy all guidance requirements for the John Deere monitor. This includes being close to the AB-line.

Your machine must also be in "autosteer ready" mode, which means you must have a field gear selected, drive at a minimum speed and have moved your steering wheel at least once after engine start.

The autosteer is then enabled by pressing the built-in resume button on the throttle control lever.

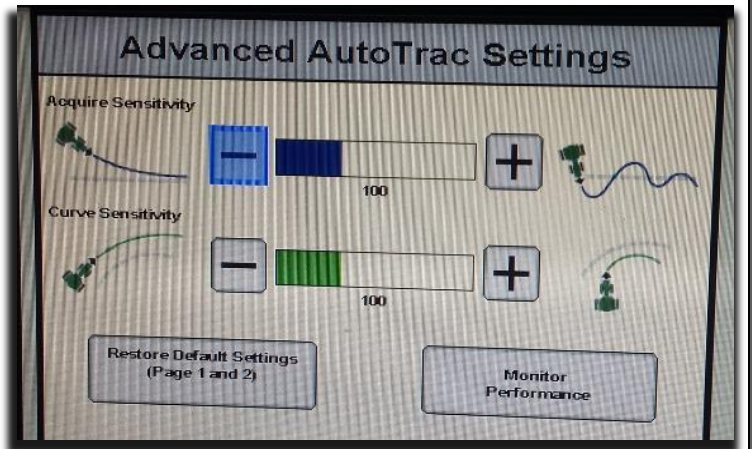
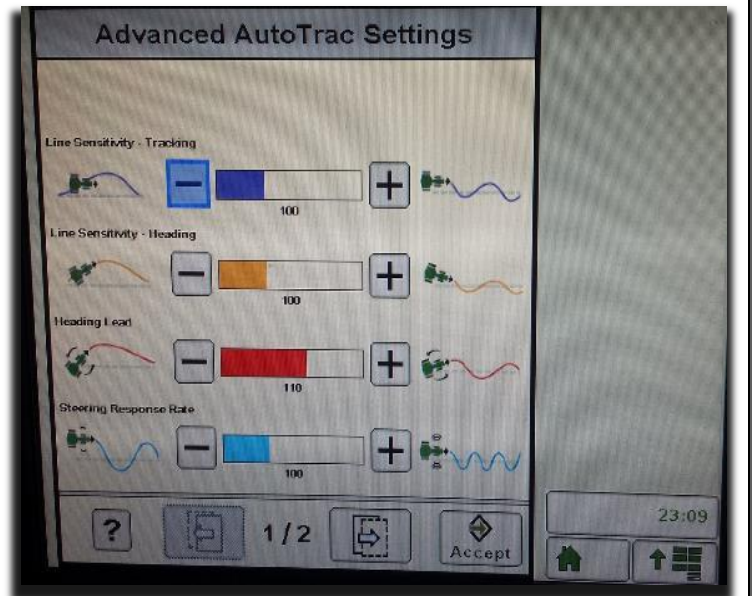
Autosteer settings can be adjusted within the JD display.



## Adjusting steering

Using the JD display you may adjust your steering performance. Most machines will perform optimally with all JD settings at 100.

If a change is required, find an open area where you can travel at target speed and adjust one parameter at a time until you are satisfied with the steering performance.



## ISO Application

The GleanerS9 bridge comes with an ISO application that will be loaded onto the John Deere monitor. The app should automatically store itself on the monitor after the first few minutes of the initial startup. On subsequent runs the app will load itself from memory as soon as possible. The GleanerS9 app includes:

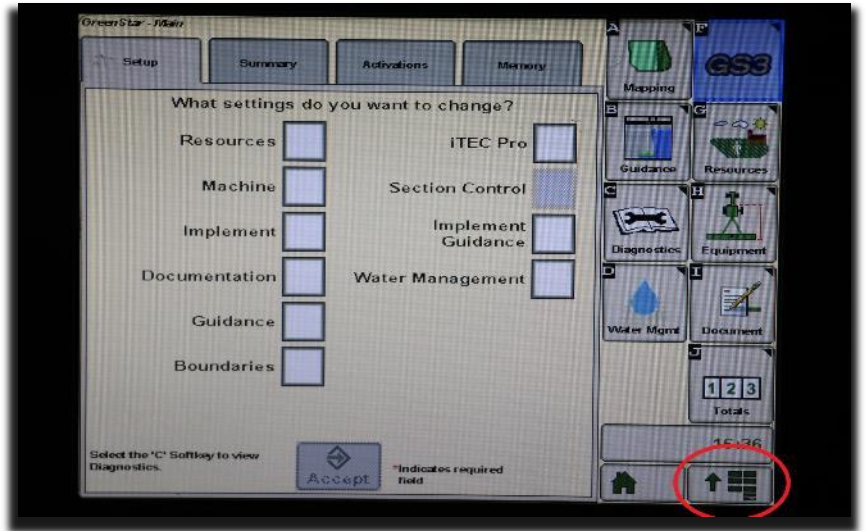
- Yield/moisture display
- Option to change the machine type
- Help page
- Support page
- Diagnostic page

Where to find the GleanerS9 ISO application on the John Deere monitor:

On a John Deere 4640 the application will be loaded in the ISOBus VT section on the main page of the display.



On John Deere 1800, 2600, 2630 the application will be shown in the side menu of the John Deere display. The side menu is opened by clicking the button on the bottom right of the display.



**NOTE:** John Deere 1800 and 2600 monitors do not show a loading bar for ISO applications, while 2630,4240 and 4640 monitors do.

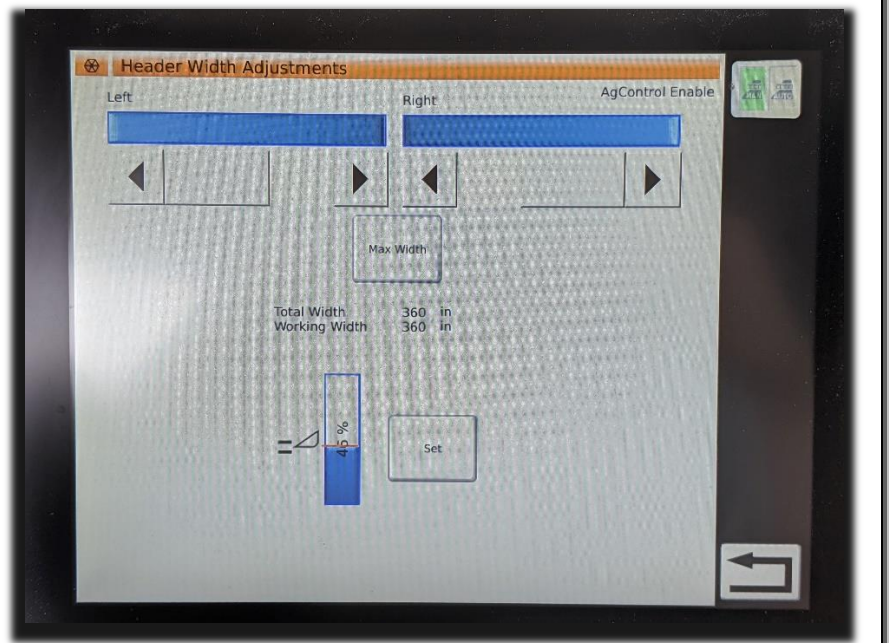


If the ISO application is not loaded:

- Try clearing the monitor's memory. On 2630 monitors this can be done in the Message Center in the side menu. Go to the Cleanup tab, check controllers, then Begin Cleanup. On 4640 monitors this can be done in the info page of the ISOBus VT. Navigate to the ISOBus VT window and click the info button at the top of the page, then press Clean Up ISO Bus VT.
- Do a hard reset of the John Deere monitor (Unplug it, then plug it back in).
- Do a full restart of the machine. Remember the app may take a few minutes to load.

## Additional information for GleanerS9-JD Bridge

Work recording in the GleanerS9-JD Bridge is done based on the 'workstate' of the GleanerS9 machine. For workstate to be considered on by the machine, the header and threshing must be on, and the header must be lowered below the Gleaner's set workpoint. This workpoint can be set in the built-in monitor in the Gleaner machine under the 'Header Width Adjustments' section of the monitor.



For yield and product density to be received by the GleanerS9-JD Bridge, a task must be set up and enabled in the 'TaskDoc' section of the built-in monitor (Shown right).

Product density is determined by what type of crop is selected in the built-in monitor. Verify that the appropriate crop type is selected in the 'Crop Settings' section.

